

Location! Location! Location!

How much can you learn about where an animal comes from?

Student Introduction

- ▶ Experience the habitat of different animals using your senses.
- ▶ Consider how the zoo park creates an appropriate habitat for the animals they look after.



On entering Amazon World... Use your senses!

What do you:

- ▶ feel?
- ▶ see ? (Don't forget to look up as well as down)
- ▶ hear?
- ▶ smell?



Useful words
humid...
warm...
green...

Describe how it seems different from the world outside

What do you notice about the plants? Look at the leaves.

Draw one of the large leaves looking very carefully at its shape.



Where in the World?

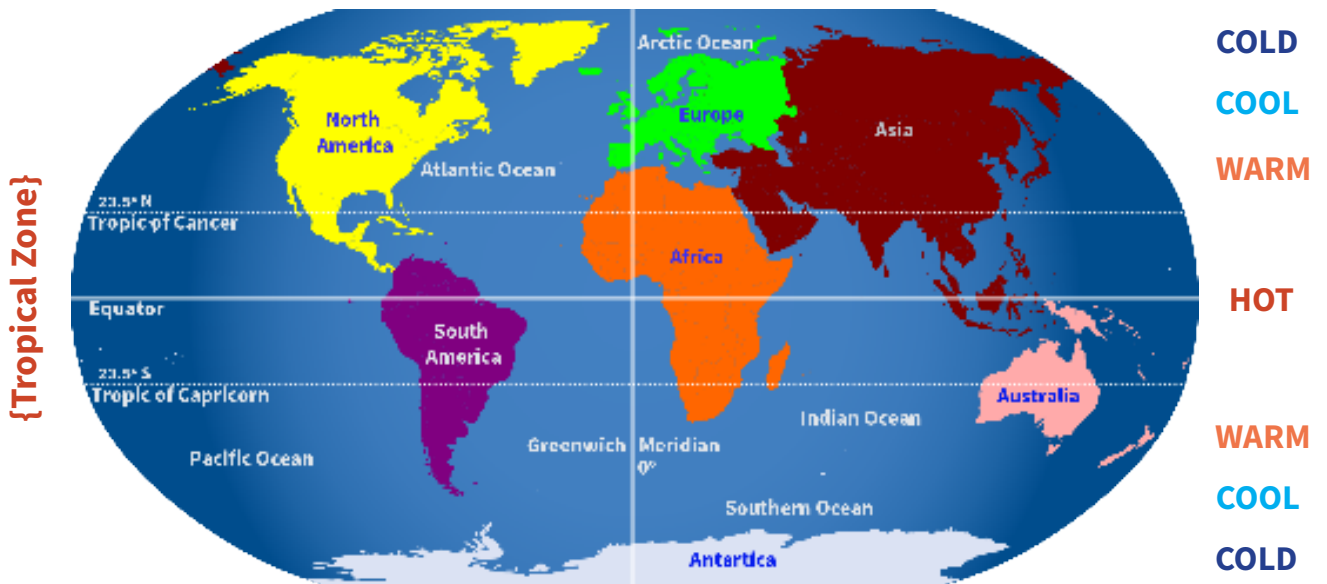
Find and name the animals!

Look at the information boards then draw lines to where they live on the map.









Add another animal you can find...









Turn over for your next challenge...

Find two animals that live very near the Equator.

These live in the hottest **equatorial rainforests**.

Rainforests that are not on the equator but are either side of the equator (between the tropics) are called **tropical rainforests**. They are also very hot.

How does the zoo create the right conditions for these animals?

Think of 3 ways:

1.

2.

3.

The animals that are kept inside in the zoo live in the hot rainforests in the wild.

They would die outside in the winter here.

Some species now only live in zoos as the forests where they lived have been destroyed.



CHALLENGE

Look at the information boards.

Can you find a **species that is threatened**?

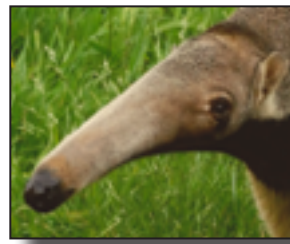


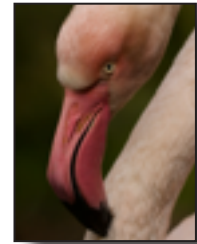
Outside: Find these animals.

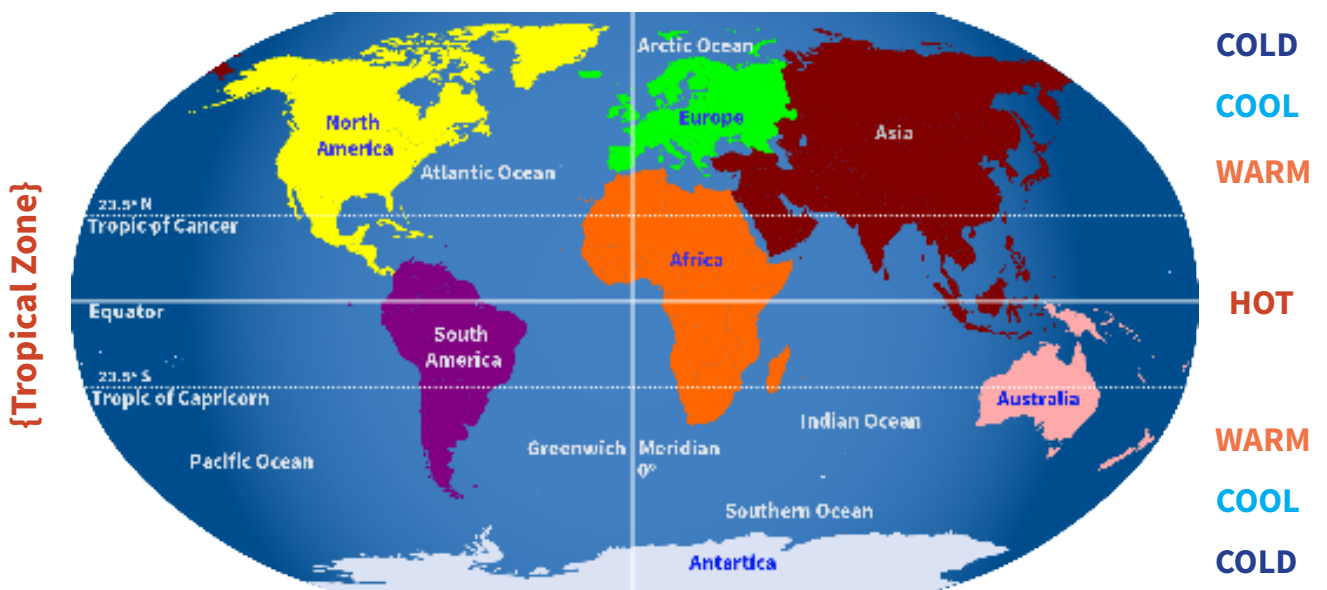
Name them and show where they live on the map.





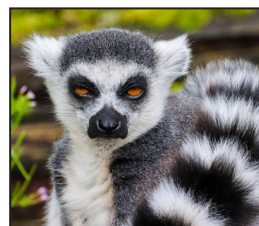






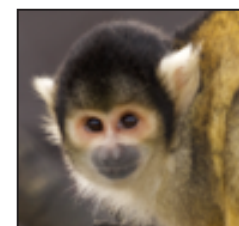
Add another animal you can find...





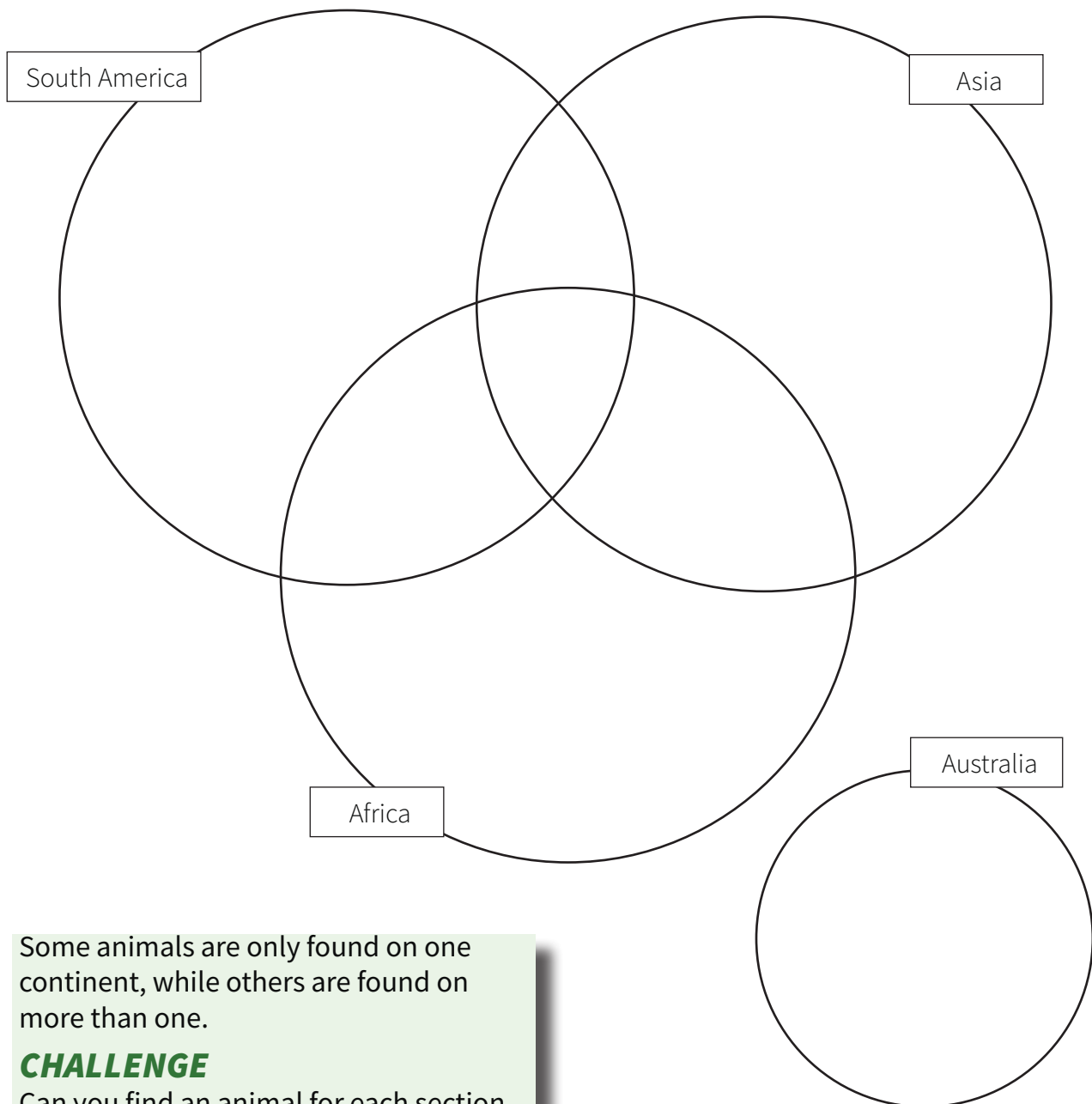






Use all your answers to help you to complete this diagram.

Can you fill in names of species from all these continents?



Some animals are only found on one continent, while others are found on more than one.

CHALLENGE

Can you find an animal for each section of the diagram?

Which is the most widespread animal group you can find?

Most animals in this zoo can be found on which continent?
