

Terrifying Teeth!

What did dinosaurs eat?

Student Introduction

- ✓ You will search for fossil teeth and work out which creatures they came from.
- ✓ You can then work out what these creatures ate.

Background

- ▶ At Dinosaur Expeditions you can see displays of dinosaur teeth, fossils, models and pictures.
- ▶ You can search for fossil teeth and use the worksheet to help you find out which creature they belonged to.
- ▶ If you can correctly say which creature they came from you get to keep 3 fossil teeth!



Teaching resources by Education Destination Ltd.

Curriculum relevant materials supporting school trips to the Isle of Wight

Book today with Education Destination and get full access to this and hundreds more quality resources

www.edudest.uk



These boxes contain 50 million year old fossil teeth from Morocco in North Africa.

STEP
2

Whose Teeth are These?

- ✓ Use the key on page 2 to work out which creature the teeth came from.
- ✓ Tell the staff which fossil teeth you found.
- ✓ Choose the ones you would like to keep.

Student name: _____



Odontaspis tooth

YES

Is the point long and thin?

YES

Lamm tooth

NO

Has it got a root?

YES

Teaching resources by Education Destination Ltd.

Curriculum relevant materials supporting school trips to the Isle of Wight

Book today with Education Destination and get full access to this and hundreds more quality resources

www.edudest.uk

Identifying Teeth

Has it got a sharp point?

Ray fish tooth

YES

Has it got lines on the top?

NO

Pycnodont fish tooth

NO



STEP
3

What did dinosaurs eat?

The shape of tooth depends on the food eaten.
Lions have sharp teeth to tear their meat.

Cows have lots of flat teeth to chew grass.
The incisors (front teeth) have a sharp edge and bite the grass.



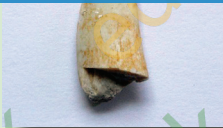
If you find a skull with lots of molars you would know the animal was a herbivore.

Teaching resources by Education Destination Ltd.

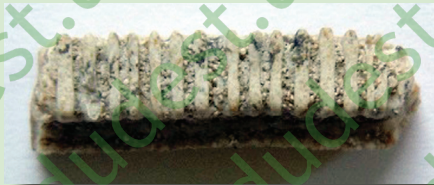
Curriculum relevant materials supporting school trips to the Isle of Wight

Book today with Education Destination and get full access to this and hundreds more quality resources

www.edudest.uk



Slicing teeth to tear large fish.



Grinding teeth with ridges to crush smooth shells.



Flat teeth to crush shells.



Piercing teeth to cut into small fish.

