



J.B. Priestley

Resident at Brook Hill House, Brook

J.B. Priestley was born in Bradford in 1894 and after being educated at Belle Vue Grammar School, he went to work for a wool firm called Helm & Co.

It was whilst working here that he started writing at night; he had some of his articles published in newspapers as far away as London and he later moved south.

He served in the World War I and experienced many injuries – in 1916 he was buried alive by a trench mortar

Teaching resources by Education Destination Ltd.

Curriculum relevant materials supporting school trips to the Isle of Wight

Book today with Education Destination and get full access to this and hundreds more quality resources

www.edudest.uk

Due to the fact that he loved socialising with friends and family, he hosted great parties and was nick-named 'Jolly Jack' for his bubbly character. However, to those who did not know him particularly well, he came across as rather gruff.

During his time on the Isle of Wight, he wrote many of his works, including *An Inspector Calls*, which is one of his best-known plays and a classic of the mid-twentieth century.

History Activity:

- ▶ Before, or after your visit, research the life of J.B. Priestley and produce a timeline of Priestley's works.
- ▶ On this timeline, you could also include some of his major, personal life-events (e.g. his involvement in the war, the birth of his children, his marriages etc.).

5 things I've learned about J.B. Priestley are:



- 1.
- 2.
- 3.
- 4.
- 5.



Arts, Literary & History Trail - BROOK - KS2



Despite spending many happy years on the Isle of Wight, the Priestleys left in 1959. The reason was that living on an island meant they felt 'cut off' from friends and family.

At this time, people didn't have the technology we have today. They wrote letters to each other to express their feelings and let their friends know what was happening in their everyday lives.

The slower pace of life meant that people could sit and take the time to craft a letter. Because they had fewer things to do, they could focus fully on the things they did do.

- ▶ Imagine you have moved away from your friends to a new town. Write a letter to a friend describing your feelings and the things you have been doing in your new town.
- ▶ You could include information about what your new house is like, what you can see from the house - sea, beach, cliff, hill, down, etc., and who lives nearby. Also what do you miss?

Teaching resources by Education Destination Ltd.
 Curriculum relevant materials supporting school trips to the Isle of Wight
 Book today with Education Destination and get full access to this and hundreds more quality resources
www.edudest.uk





The Long Stone Mottistone, near Brook



The Long Stone is a good name for this site. It stands 3.9 m tall and is made from a local stone called greensand. The site was excavated by C.N. Hawkes in 1956. The results from this suggested that this stone could have been the entrance to a barrow. In the Stone Age heroes and leaders were buried in barrows. Barrows were made by arranging tall stones so that they made the walls of a

Teaching resources by Education Destination Ltd.

Curriculum relevant materials supporting school trips to the Isle of Wight

Book today with Education Destination and get full access to this and hundreds more quality resources

www.edudest.uk

According to the local myth, there was a competition between St Catherine and the Devil, with the winner of this contest gaining control of the Isle of Wight. St Catherine allegedly threw the tall stone the furthest and the Devil's smaller stone fell short, resulting in her winning the challenge, demonstrating that good can defeat evil.

The playwright J.B. Priestley was married to Jacquetta Hawkes, who was a renowned archaeologist. She helped excavate the long barrow at the Long Stone.

Before you visit:

Go to the National Trust Website and look at the information about the Long Stone:

<http://www.nationaltrust.org.uk/mottistone-estate/features/the-long-stone-at-mottistone>

On-site Activities:

- ▶ Sit and sketch the Long Stone.
- ▶ Photograph the monument with people alongside, showing its size.
- ▶ Invent your own myth or legend for the Long Stone. You could make notes now about the key characters and events before refining your writing back at school, ensuring that you have included the correct features of this style of writing. Use the template on page 4 to help you.

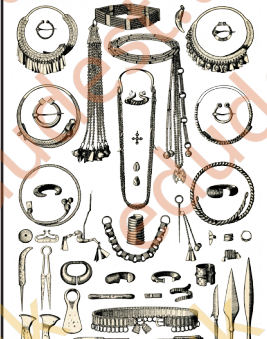
Post-visit Options:

- ▶ Represent the Long Stone as a monument with mystical powers – how could you use media to represent this?
- ▶ Invent a myth or legend for a building/monument of significance in your local area.



Ideas for your myth or legend

Things that might be found in ancient barrows

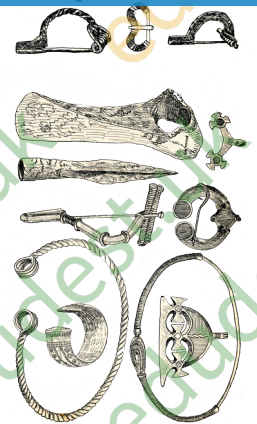


Teaching resources by Education Destination Ltd.

Curriculum relevant materials supporting school trips to the Isle of Wight

Book today with Education Destination and get full access to this and hundreds more quality resources

www.edudest.uk



KEY WORDS

- knife
- sword
- brooch
- axe
- memento
- lord
- warrior
- victor
- afterlife