



Investigate the Dinosaurs!

Hunt for answers in the Dino museum!



Resource Number

102164

Student Introduction

- ▶ Dinosaur Isle is an interactive museum
- ▶ It shows us what the world of the dinosaurs was like
- ▶ Can you discover the scientific information?

Science KS1
Scientific Enquiry
Investigate the dinosaurs

Teaching resources by Education Destination Ltd.

Curriculum relevant materials supporting school trips to the Isle of Wight

Book today with Education Destination and get full access to this and hundreds more quality resources

www.edudest.uk

THE CHALLENGE!

Enter the museum

1. How many years ago did dinosaurs live?

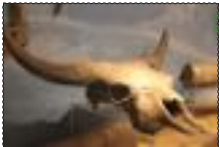
Explore the corridor...

2. What are the 3 rock types called?

- 1.
- 2.
- 3.

Ice Age Wight

3. What is this (below) made of?



Fossils: Messages from the Past

4. What is a fossil?

2.

The Greensand Sea

7. What has 'drowned the land of the dinosaurs'?

Enter the main Dinosaur Museum exhibit area

8. Why might some dinosaurs have different teeth to others?

9. Name a dinosaur that has been found on the Isle of Wight:



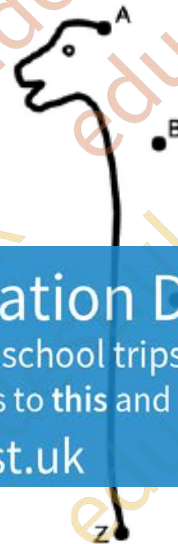
Dino Word Hunt

D	J	S	U	S	K	C	O	R	T	AMMONITE
S	E	N	O	B	S	P	Z	V	R	BONES
K	D	I	N	O	S	A	U	R	R	CHALK
E	T	E	E	T	H	W	R	O	F	DINOSAUR
W	T	N	I	R	P	E	R	E	R	
N	F	V	D	I	C	E				
F	F	O	S							
C	H	A	L	K	R	J	F	V	B	NEOVENATOR
N	E	O	V	E	N	A	T	O	R	ROCKS
T	E	T	I	N	O	M	M	A	V	TEETH

Teaching resources by Education Destination Ltd.

Curriculum relevant materials supporting school trips to the Isle of Wight
Book today with Education Destination and get full access to this and hundreds more quality resources

www.edudest.uk

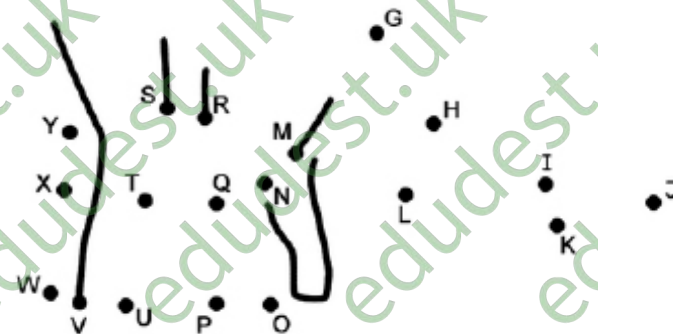


Make this dinosaur picture!
Connect the dots by linking the capital letters.
Connect A to B to C to D, and so on.

Cloze Exercise

The dinosaurs lived in the _____.
Even now, millions of years later, _____ and _____ are still being found.

There are two types of dinosaur: _____ (plant-eating) and _____ (meat-eating).
_____ are the direct descendants of dinosaurs.



Word Bank

carnivore fossils Birds
footprints past herbivore

