

## Reading for information

### STUDENT INTRODUCTION

Below is an extract from the Dinosaur Isle website

- ▶ Read the text
- ▶ Answer the questions on page 2 to show you can understand the text's content



### Site access

#### Yaverland

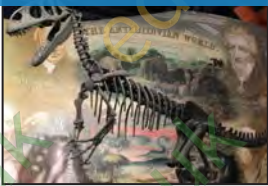
A few minutes walk along the seawall from Dinosaur Isle, and then via a short flight of steps onto a sandy beach.

## Teaching resources by Education Destination Ltd.

Curriculum relevant materials supporting school trips to the Isle of Wight walks.

Book today with Education Destination and get full access to this and hundreds more quality resources

[www.edudest.uk](http://www.edudest.uk)



walking or being carried down the short flight of steps between the carpark and the beach. Please let us know when you book the walk if you require the chair so that we can ensure that it is ready. Please visit our [School field trip](#) webpage for a picture of the chair at Yaverland.

#### Shanklin

The sandy and pebbly foreshore is reached by a wide concrete ramp. The beach is crossed by wooden groynes and so participants may need to step over these if the tide is higher than normal. Further on the beach can be covered by larger boulders, and there may be rockpools depending on the sand conditions on the day.



## Questions

Your teacher may wish you to answer the questions on a separate sheet or in your books.

1. How do you get to Yaverland from Dinosaur Isle?

2. Which beach is 'sandy and pebbly'?

## Questions (continued...)

102171

3. At Shanklin, what will you need to step over if the tide is high?

4. Name the TWO things you may see or find at Shanklin:

## Teaching resources by Education Destination Ltd.

Curriculum relevant materials supporting school trips to the Isle of Wight

Book today with Education Destination and get full access to this and hundreds more quality resources

[www.edudest.uk](http://www.edudest.uk)

5. Where would you go to find a picture of the beach wheelchair at Yaverland?

### *Extension*

6. Why do you think it is important to have this information before you visit?

