

## You'll Be Amazed!

### 10 Questions you must ask at Dinosaur Isle

#### Student Introduction

- ▶ Dinosaur Isle is an interactive educational museum
- ▶ The museum exhibits show us what the world of the dinosaurs was like, as well as the the world before they existed

#### What facts can you find out when you visit?

To practise your speaking & listening skills, you need to ask questions of the experts.

## Teaching resources by Education Destination Ltd.

Curriculum relevant materials supporting school trips to the Isle of Wight

Book today with Education Destination and get full access to this and hundreds more quality resources

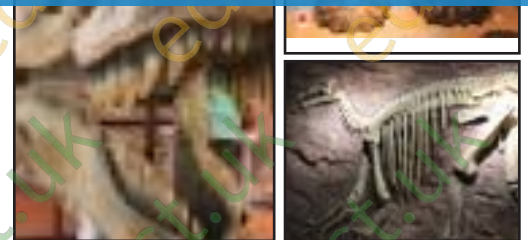
[www.edudest.uk](http://www.edudest.uk)

- ✓ Can you write down their answers?
- ✓ Listen to their answers?
- ✓ Make notes on what you find out?
- ✓ Be willing to share your answers to the class later?

#### TASK

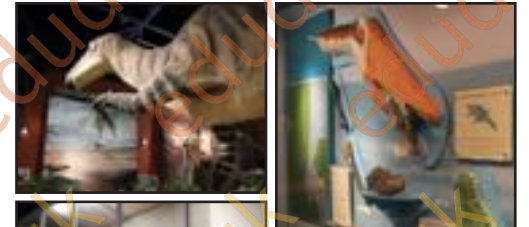
Find the answers to these questions by asking the experts:

1. What is a fossil?
2. How many years ago did the dinosaurs walk on the Isle of Wight?
3. What was the diet of the dinosaurs, and how did this differ among the different species?
4. How long was a dinosaur's life span?



Other things to find out:

6. What were the names of all the geologic time periods prior to and including the time of dinosaurs?
7. What was an ammonite, and to what living creature is it closely related?



8. Teaching resources by Education Destination Ltd.

Curriculum relevant materials supporting school trips to the Isle of Wight

Book today with Education Destination and get full access to this and hundreds more quality resources

[www.edudest.uk](http://www.edudest.uk)

9. How big was an adult Iguanodon, and what are its key features?



10. What are coprolites?

What other questions did you ask, or want to ask? Note them here:



102033

©2014 Education Destination [www.educationdestination.co.uk](http://www.educationdestination.co.uk)  
Images © Dinosaur Isle

