

You'll Be Amazed!

10 Questions you must ask at Dinosaur Isle

Student Introduction

- ▶ Dinosaur Isle is an interactive educational museum
- ▶ The museum exhibits show us what the world of the dinosaurs was like, as well as the the world before they existed

What facts can you find out when you visit?

To practise your speaking & listening skills, you need to ask questions and make notes on what you find out.



Teaching resources by Education Destination Ltd.

Curriculum relevant materials supporting school trips to the Isle of Wight

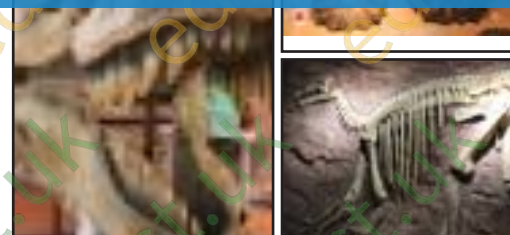
Book today with Education Destination and get full access to this and hundreds more quality resources

www.edudest.uk

TASK

Find the answers to these questions by asking the experts:

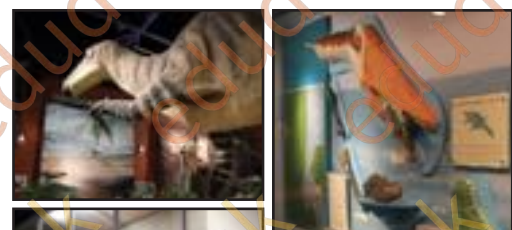
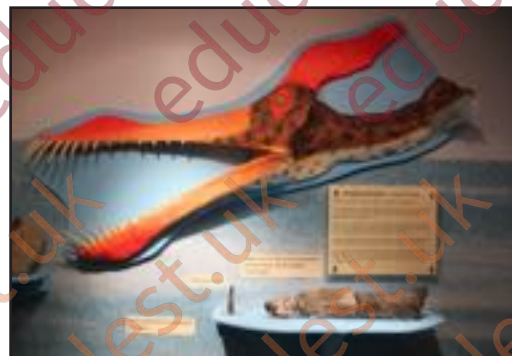
1. What is a fossil?
2. How long ago did the dinosaurs walk on the Isle of Wight?
3. What did dinosaurs eat and drink?
4. How long was a dinosaur's life span?



Other things to find out:

6. What were the names of the 3 periods spanning the time of dinosaurs?

7. What was an ammonite?



8. What was the Ice Age and when did it begin?

Teaching resources by Education Destination Ltd.

Curriculum relevant materials supporting school trips to the Isle of Wight

Book today with Education Destination and get full access to this and hundreds more quality resources

www.edudest.uk

9. How big was an adult Iguanodon?



10. What are coprolites?

What other questions did you ask, or want to ask? Note them here:



102032

©2014 Education Destination www.educationdestination.co.uk
Images © Dinosaur Isle