

## Comprehension of Information

### STUDENT INTRODUCTION

- ▶ The Isle of Wight Steam Railway is a working railway.
- ▶ There are texts produced that inform visitors about aspects of the railway.



### READING TASK

- ✓ Have a look on the leaflet extract on page 2.
- ✓ Your task is to show an understanding of the information within the text.
- ✓ Read the leaflet extract thoroughly.
- ✓ Answer the questions below. Your teacher may require you to write on this sheet, or on paper.

### Questions

1. What year was the first railway line on the Isle of Wight opened?
2. Which king or queen was on the throne at the time?
3. How many miles of railway line were there, in the past, on the Isle of Wight?
4. In 1966, what line remained?
5. What happened to all the old steam engines and trains after 1966?
6. What year did the current Isle of Wight Steam Railway open?
7. What is the job of a 'signalman'?
8. What is the name for the 'cab' of the steam locomotive where the Driver and Fireman work?
9. What is the name for the mechanical device which can be controlled to direct a train from one track onto another?
10. 'Woodhouse Crossing' is closest to which station on the map?
11. What is the purpose of this page of the leaflet overall, and who is the audience?

Teaching resources by Education Destination Ltd.

Curriculum relevant materials supporting school trips to the Isle of Wight

Book today with Education Destination and get full access to this and hundreds more quality resources

[www.edudest.uk](http://www.edudest.uk)



## HOW it all began

The first railway line on the Isle of Wight opened in 1862, when Queen Victoria was still on the throne! Eventually, nearly every town and village on the Island was connected by a daily service of steam trains on a network of 55 miles of railway lines.

By 1966 most of these lines had closed and just the eight mile Ryde to Shanklin line was electrified and remained open.

All the old steam engines, carriages and wagons were broken up, except for the few precious items saved for preservation by the Isle of Wight Steam Railway, which re-opened just 1 1/2 miles of track between Havenstreet and Wootton in 1971. At that time there was just the platform and a small station building at Havenstreet, one steam engine and six carriages.

40 years on the line has tripled in length and is an award-winning living museum attracting over 110,000 visitors each year. There are now 11 steam locomotives, three diesel locos, a dozen carriages and four stations.



## WHY does it

**The Drive**

Drives the steam engine making it move.

**The Fire**

Shows the fire going, which boils the water to make the steam!

**The Guard**

Makes sure the train is safe on board, before the Driver starts the train.

**The Signal**

Works in the signal box to ensure it's safe to go.

# Teaching resources by Education Destination Ltd.

Curriculum relevant materials supporting school trips to the Isle of Wight

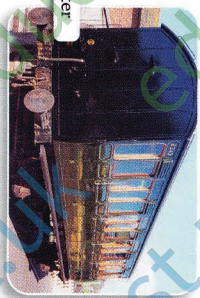
Book today with Education Destination and get full access to this and hundreds more quality resources

[www.edudest.uk](http://www.edudest.uk)

## RECYCLING

You could say all our Island Railways have been recycled!

All of our locomotives, carriages and stations were once headed for the scrap-heap, but were saved, rebuilt and restored to work again for the pleasure of our many visitors.



After

## Railway WORDS

### Footplate

The 'cab' of the steam locomotive where the Driver and Fireman work.

The Driver on the Footplate

### Regulator

The lever the Driver uses to start the steam locomotive - A bit like an 'accelerator' in a car.

### Sleepers

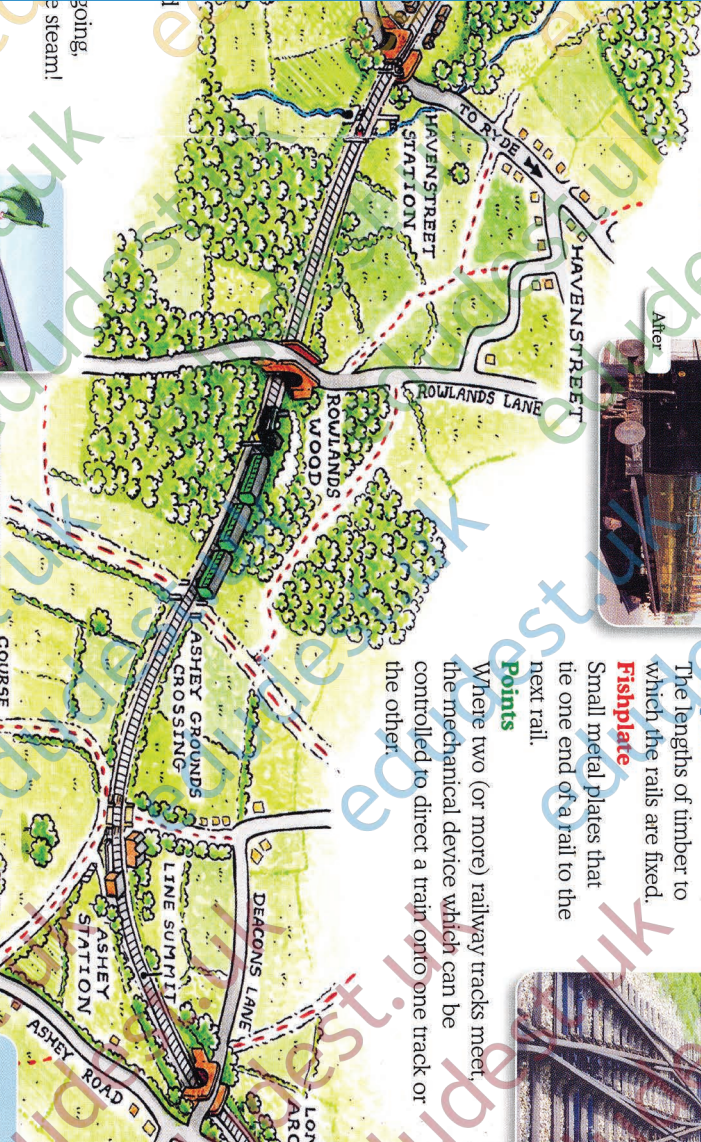
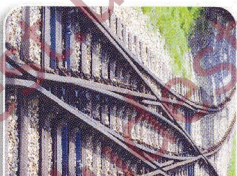
The lengths of timber to which the rails are fixed.

### Fishplate

Small metal plates that tie the one end of a rail to the next rail.

### Points

Where two (or more) railway tracks meet, the mechanical device which can be controlled to direct a train onto one track or the other.



The Guard



The Signalman



ASHLEY DOWN SEA MARK



Exchanging Tokens